

Mooring Analysis of Offshore Aquaculture Oceanic Farming Platform for Seaweed

Sulaiman OO^{1*}, Kader ASA², Magee A³ and Othman K⁴

¹Department of Maritime Technology, Faculty of Maritime Studies and Marine Science, Universiti Malaysia Terengganu, 21030, Kuala Terengganu, Malaysia

²Department of Marine Technology, Faculty of Mechanical Engineering, Universiti Teknologi Malaysia, 81300, Skudai, Johor, Malaysia

³Technip Corporation, Jalan Tun Razak, Kuala Lumpur, Malaysia Bureau Veritas Corporation, Kuala Lumpur, Malaysia

⁴Bureau Veritas Corporation, Kuala Lumpur, Malaysia

Abstract

Aquaculture activities are performed at close proximity to coastline and near shore. Issues and environmental impact concerns and challenges necessitate offshore aquaculture that required reliable structural integrity and mooring system design for ultimate state limit, fatigue state limit and accidental and progressive state limit against environmental loading and accidental loading. To avoid mooring system failure, selecting an appropriate breaking strength and limit state for mooring system components is necessary. Suitable mooring system has been designed by group of researchers at Universiti Malaysia Terengganu. Valuable information was obtained from Technip and Bureau Veritas. The system has been tested in towing tank in Universiti Teknologi Malaysia. This paper describes mooring system design that account for forces and environmental loadings. The paper describes evaluation of optimum mooring performance in wave and current loadings on mooring components anchor buoy and riser elements that are involved in the mooring system dynamics.

Keywords: Aquaculture; Dynamic loading; Marine; Offshore; Structure

Introduction

Floating offshore aquaculture farms drift at the mercy of ocean currents, wind and waves. They are designed to move easily up and down in a vertical motion that can range up to several meters under normal sea conditions and tens of meters during a storm. Although these systems can be positioned at depths that avoid storm damage, a major challenge of such floating systems is the uncertainty of where the farms may end up after a storm. There has been renewed interest in floating farms in recent years as platforms and technologies have improved to withstand open ocean conditions. Almost all that were moderately successful have combined a floating platform with a tethered or anchored component [1]. Most aquaculture systems are tethered to the sea floor through anchors, floats and lines.

Recently, large scale cultivation of seaweed have been developed to meet the increasing market demand and at the same time to provide alternative livelihood schemes for local populations. The large farming expansion near onshore is likely to bring so much problem. In some cases, unfavorable environmental factors such as near shore pollution from sewage pushes marine farming sites further offshore to water depths of 50 m or greater. Thus the need to move operations into more exposed sites and in totally unprotected open sea may have to face devastating natural disasters caused by tropical storms is becoming necessary. In non-stationary offshore structure, wave, current and wind forces increase rapidly [2]. This means that maximum wave heights of 5-10 m, current speed of 2-3 knots and wind speed of 35 m s⁻¹. This situation can occur at the same time and in the same direction. A requirement is, therefore, that the farming unit may be able to withstand conditions like these. Mooring system design is a trade-off between making the system compliant enough to avoid excessive forces on the farming platform, and making it stiff enough to avoid difficulties, such as damage caused by excessive horizontal excursions of the farming platform.

This study use South China sea, Terengganu as a case study. The study site is 200 meters off the beach of Kampung Telaga Papan. Telaga Papan is fishing village. The local people are very interested to perform large seaweed plantation. The location is exposed to North East strong wave during monsoon season (Figure 1).

Mooring geometry

Design criteria specific for the site in the coast of Setiu was established

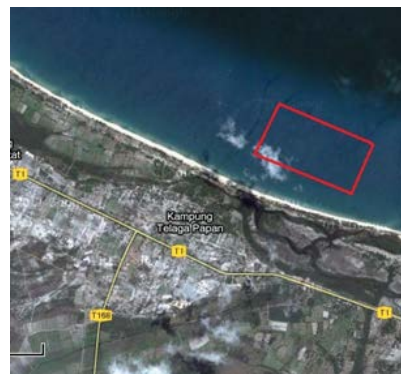


Figure 1: Location of research area.

***Corresponding author:** Sulaiman OO, Department of Maritime Technology, Faculty of Maritime Studies and Marine Science, Universiti Malaysia Terengganu, 21030, Kuala Terengganu, Malaysia, Tel: +609668-3697/+60177244339; Fax: +609-6683193; E-mail: o.sulaiman@umt.edu.my

Received December 12, 2014; **Accepted** March 23, 2015; **Published** March 30, 2015

Citation: Sulaiman OO, Kader ASA, Magee A, Othman K (2015) Mooring Analysis of Offshore Aquaculture Oceanic Farming Platform for Seaweed. J Coast Zone Manag 18: 399. doi: [10.4172/jczm.1000399](http://dx.doi.org/10.4172/jczm.1000399)

Copyright: © 2015 Sulaiman OO, et al. This is an open-access article distributed under the terms of the Creative Commons Attribution License, which permits unrestricted use, distribution, and reproduction in any medium, provided the original author and source are credited.

prior to the engineering analysis and specification of components. It is necessary that the new mooring be able to accommodate 100 mx 1000 m planting block shape, the block had to be able to withstand the waves and currents that occur at the site, especially those associated with extreme storms. The mooring system also needs to be designed to minimize entanglement of seaweed planting. The design constraint required that the mooring system be deployed in the existing permitted site approximately 200 meter from the shore. The site is 10-50 meter of water depth and the bottom composition consists of relatively heterogeneous materials, which include bedrock outcroppings, gravel and muddy sands. Figure 2 shows the top view of the mooring system [3].

Mooring analysis

For this study, current is considered because of the dominant contribution of load compared with wave and wind. Static current loads are discussed in detail below. Static loads due current are separated into longitudinal load and lateral load. Flow mechanisms which influence these loads include main rope drag, main buoy drag, seaweed drag, and planting lines drag [4].

Total load is determined using the following equation:

$$F_{total} = F_{main\ rope} + F_{buoy} + F_{load\ lines} + F_{seaweed} \quad (1)$$

The analysis of cables, or mooring lines that maintain surface and subsurface platform on station, is the study of the loads exerted on the lines by gravitational and time-invariant current fields and of their resulting effects. This study allows one to predict the geometry of the line between the structure and its anchoring point and the distribution of stresses from top to bottom. The study of mooring cable addresses the two-dimensional cases where the line and the current can be

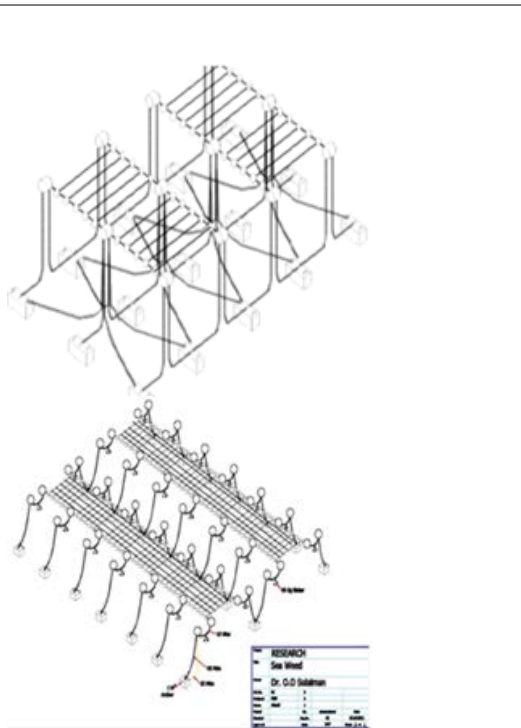


Figure 2: Mooring geometry.

assumed to be coplanar [5]. Forces that need to be considered are the immersed weight or the resultant gravity force per unit of cable length is usually defined as

$$P = B_c - W_c \quad (2)$$

Where:

B_c is cable buoyancy per foot that is the weight of the water displaced by one foot of cable, W_c is "air weight" of one foot of cable.

The hydrodynamic resistance due to current passing a cable element of diameter and the length, when normal to the flow as shown in the Figure 3 is given by:

$$R_{ds} = \frac{1}{2} \rho C_{DN} d V^2 ds \quad (3)$$

where: C_{DN} = Normal drag coefficient, V = Current speed.

If the cable element is at an angle ϕ from the current horizontal direction, its resistance can be considered to be made of two components: one normal and one tangential to the cable.

The normal component is given by

$$D_{ds} = \frac{1}{2} \rho C_{DN} d V^2 \sin^2 \phi ds \quad (4)$$

and tangential component given by

$$F_{ds} = \frac{1}{2} \rho \gamma C_{DN} (\pi d) V^2 \cos^2 \phi ds = \pi \gamma \cos^2 \phi ds \quad (5)$$

where: $\rho \gamma C_{DN}$ = the tangential drag coefficient, $(\pi d) ds$ = the "skin" or longitudinal area of the cable element.

For equilibrium to prevail the tension, T_1 , in the segment must be

$$T_1 = [R_{x(0)}^2 + R_{z(0)}^2]^{\frac{1}{2}} \quad (6)$$

Knowing that this segment is in line with the tension vector at its upper end, its inclination is given by

$$\theta_1 = \tan^{-1} \left[\frac{R_{z(0)}}{R_{x(0)}} \right] \quad (7)$$

Under the action of the pull T_1 the segment stretches to a length $S_{(1)}$

$$S_{(1)} = L_{(1)} + \Delta L_{(1)} \quad (8)$$

where: $L_{(1)}$ = segment original length, $\Delta L_{(1)}$ = elongation resulting from the applied tension.

In order to determine the hydrodynamic coefficient of the design, the rows of seaweed are held using ropes separated by about 2.6 m between rows. A frame consisting of aluminium channel sections

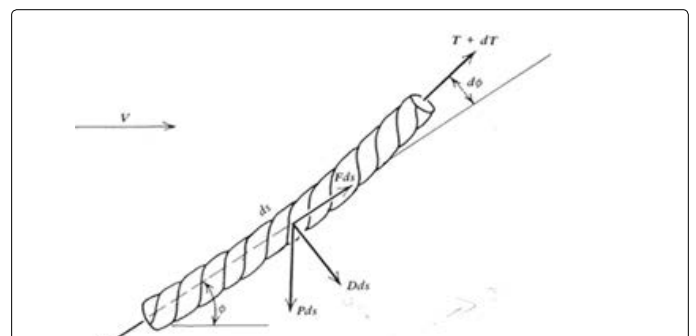


Figure 3: Forces on cable element.

attached to the towing carriage is used. The seaweed clumps then attached to a rope line. Tension load cells will be attached between the line and the frame and the measured forces recorded on the model basin's data acquisition system. Figures 4 and 5 show the aluminium test frame to hang the seaweed.

Results and Discussion

Table 1 show the data of the structure component used in this study. The full scale data were used to calculate the environment load on one block structure. Normal drag coefficient is used for the longitudinal load on the structure which is 90 degree. This is because 90 degree is considered maximum load. Tangential drag coefficient is used for the lateral load on the structure which is 0 degree. 0 degree is considered minimum load on the structure.

Mooring line properties

Table 2 shows the mooring line data used in this research. Type of mooring line used is the polyester rope. Other type of mooring line that normally used for moored platform is chain and wire rope. Water

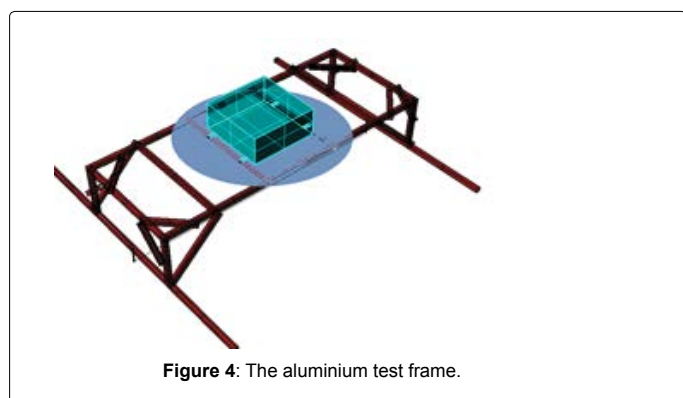


Figure 4: The aluminium test frame.

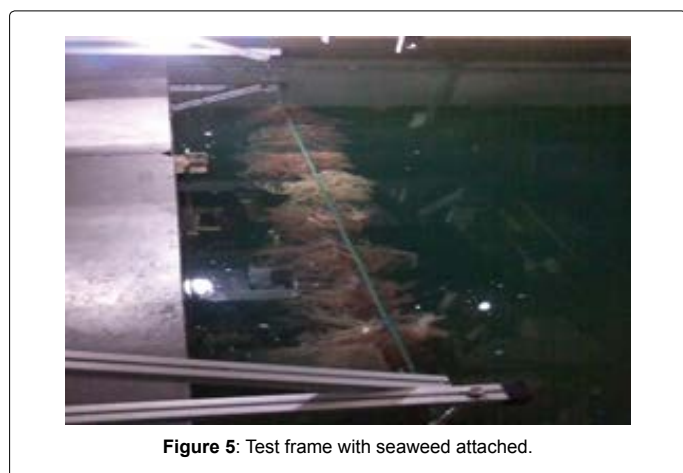


Figure 5: Test frame with seaweed attached.

	Length (m)	Diameter (m)	Effective area (m ²)	Normal drag coefficient (C _{dn})	Tangential drag coefficient (C _{dt})
Main bouy	-	0.16	2.2	0.8	0.8
Main rope	100	0.022	0.8	1.3	0.008
Load line rope	100	0.008	0.020	1.3	0.008
Seaweed plant	100	-	0.125	0.18	-

Table 1: Component properties.

Mooring Line Data	Value	Units
Effective area of mooring line	0.0015	m ²
Diameter of mooring line, D _c	0.022	m
Length of mooring line	50	m
Mean sea level	50	m
Young modulus of mooring line	132 x 10 ⁸	N/m ²
Segment length, L _n	1	m

Table 2: Mooring cable data.

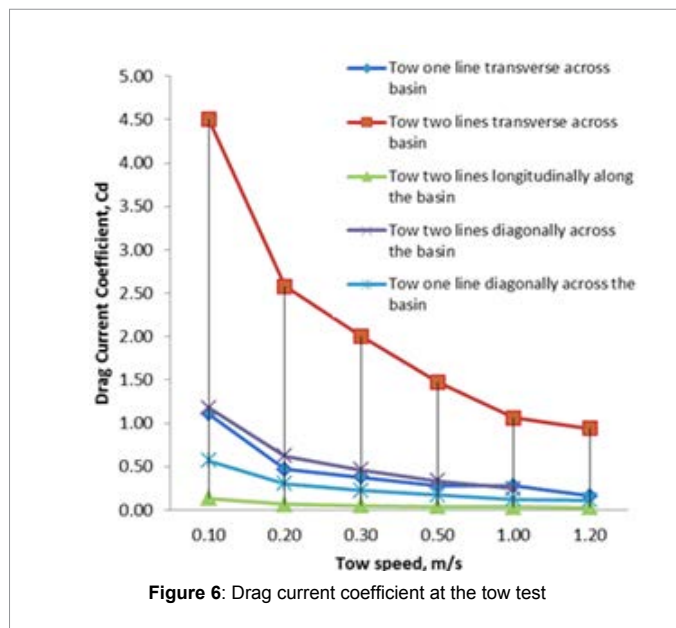


Figure 6: Drag current coefficient at the tow test

	No	Speed (m/s)	Longitudinal Load (N)			
			0.5	1	1.5	2
Main rope	2	-	266.5	1066	2398.5	4264
Main buoy	4	-	902	3608	8118	14432
Load line rope	30	-	100.50	402.02	904.56	1608.11
Seaweed plant	1	-	288.28	1153.12	2594.53	4612.5
Total load	-	-	1557.28	6229.15	14015.59	24916.61

Table 3: Longitudinal current load.

	No	Speed (m/s)	Lateral Load (N)			
			0.5	1	1.5	2
Main rope	2	-	266.5	1066	2398.5	4264
Main buoy	4	-	902	3608	8118	14432
Load line rope	30	-	0.6185	2.474	5.5665	9.8960
Seaweed plant	30	-	86.48	345.93	778.359	1383.75
Total load	-	-	1255.60	5022.41	11300.42	20089.64

Table 4: Lateral Current Load.

depth value to the seabed is 50 meters.

Figure 6 shows that the drag current coefficient of tow two lines transverse across the basin is higher than other four test cases. This is because tow line transverse across the basin has more resistance compared to tow two lines longitudinally and tow two lines diagonally across the basin. Furthermore, for tow one line, tow one line transverse across the basin has more drag current coefficient compared to tow

one line diagonally across the basin. It can be concluded that, at the transverse direction the drag current coefficient is higher than longitudinally and diagonally direction. Hence, the transverse direction should be highly considered.

Current load analysis

Four samples of current speed are taken (Table 3). The current speeds start with 0.1 m/s, 1 m/s, 1.5 m/s and 2 m/s. The maximum longitudinal current load occurs when the structure facing 2 m/s of current speed which has the value of close to 25 kN.

Table 4 shows the lateral current load. From Table 4, four samples of current speed are taken. The current speeds start with 0.1 m/s, 1 m/s, 1.5 m/s and 2 m/s. The maximum lateral current load occurs when the structure facing 2 m/s of current speed which has the value of 20 kN.

Conclusions

A station keeping analysis is performed to determine the suitable mooring component to be equipped on the seaweed farming. Model

test is carried out to determine environmental loading requirement of the system. Mooring behavior and its performances are determined for the feasibility of deploying floating structure for offshore aquaculture in exposed sites. The analysis serves as the basis for comparing and evaluating mooring systems tension.

References

1. Buck BH, Smetacek V (2006) Aquafarm Roter Sand. Alfred-Wegener-Institut für Polar-und Meeresforschung.
2. North WJ (1987) Oceanic farming of *Macrocystis*, the problems and non-problems. In *Seaweed Cultivation for Renewable Resources*, Amsterdam; 3997
3. Sulaiman OO, Allan Magee MIAR, Wan NWB (2012) Preliminary Design and Prototype Scale Model of Offshore Aquaculture Floating Structure for Seaweed Ocean Farming, ICSOT. Developments In Fixed & Floating Offshore Structures, Busan, Korea.
4. Chakrabarti R (2005) Handbook of offshore engineering (1st edtn).
5. Skop RA (1988) Mooring system: a state of the art review. J Offshore Mechanical Arctic Eng 110; 365-372.

Citation: Sulaiman OO, Kader ASA, Magee A, Othman K (2015) Mooring Analysis of Offshore Aquaculture Oceanic Farming Platform for Seaweed. J Coast Zone Manag 18: 399. doi: [10.4172/jczm.1000399](https://doi.org/10.4172/jczm.1000399)

Submit your next manuscript and get advantages of OMICS Group submissions

Unique features:

- User friendly/feasible website-translation of your paper to 50 world's leading languages
- Audio Version of published paper
- Digital articles to share and explore

Special features:

- 400 Open Access Journals
- 30,000 editorial team
- 21 days rapid review process
- Quality and quick editorial, review and publication processing
- Indexing at PubMed (partial), Scopus, DOAJ, EBSCO, Index Copernicus and Google Scholar etc
- Sharing Option: Social Networking Enabled
- Authors, Reviewers and Editors rewarded with online Scientific Credits
- Better discount for your subsequent articles

Submit your manuscript at: <http://www.omicsonline.org/submission>

